

LADY[®]

Revestimentos Especiais

**Cartela de
Cores de Tecidos**

Basket**ESPECIFICAÇÕES**

COMPOSIÇÃO	100% PES
PESO	246 g/m ² + -5% (344 g/m Linear) + - 5%
LARGURA	1,40m

PERFORMANCE

RESISTÊNCIA AO RASGO TEAR RESISTANCE (ASTM D 2261)	Urdume - Warp Trama - Weft	23,01 KGF 19,74 KGF
RESISTÊNCIA À RUPTURA BREAK STRENGHT (ASTM D 5034)	Urdume - Warp Trama - Weft	148,0 KGF 136,34 KGF
ALONGAMENTO (ASTM D 4966)	Urdume - Warp Trama - Weft	53,13% 51,13%
RESISTÊNCIA À ABRASÃO ABRASION RESISTANCE (ASTM D 4966)	Pilling Alteração de cor	NOTA 4 NOTA 4
SOLIDEZ DA COR À LUZ LIGHT FASTNESS (ISO B 105 B02 40 HORAS)		NOTA 4
SOLIDEZ DA COR À FRICÇÃO COLOR FASTNESS TO RUBBING (AARCC 8)	A Seco A Úmido	NOTA 5 NOTA 4/5
FLAMABILIDADE		CLASEE 1 - Propaga Chamas Com aplicação de anti-chamas (opcional) não progaga
FLAMMABILITY (ASTM 12030)		
APLICAÇÃO APPLICATION	Assentos / Painéis Seating / Panels	
VARIAÇÃO DE TONS COLOUR MATCHING		Tons podem variar dentro de tolerâncias comerciais Batch to batch variations may occur within commercial toleranc
CÓDIGO DE LIMPEZA "WS"		Use agente de limpeza de base água, para manchas de base aquosa. Use limpador solvente para manchas a base de óleo.
CLEANUNG CODE		Water base detergent for water base stains Solvent for oily stains

**TECELAGEM LADY Ltda.**

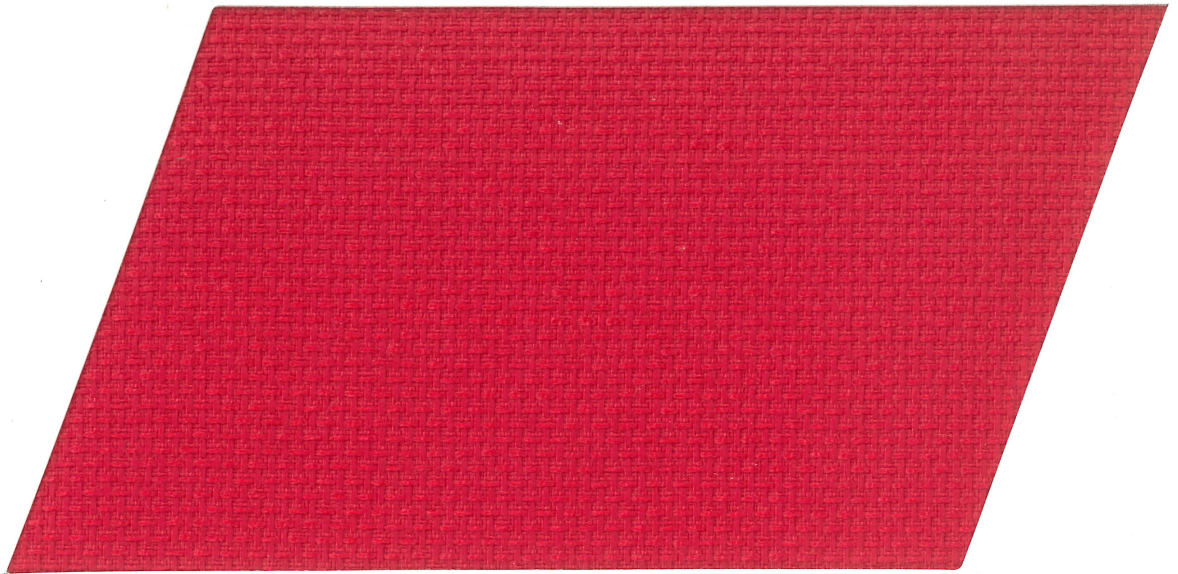
Rod. Pres. Tancredo de Almeida Neves, KM 40

CAIEIRAS - SP - Cep: 07700-000

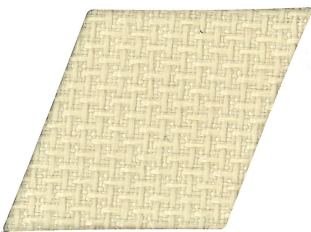
Tel.: (11) 5519-1945 Fax: (11) 5519-1952

www.ladytex.com.br

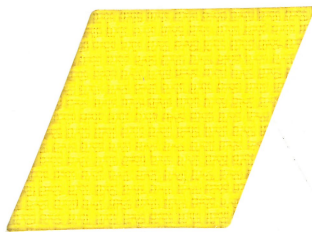
E-mail: lady@ladytex.com.br



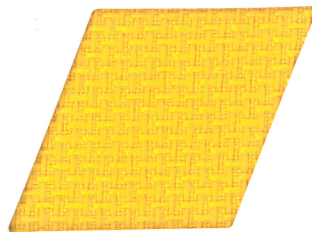
Cor 320



Cor 1070



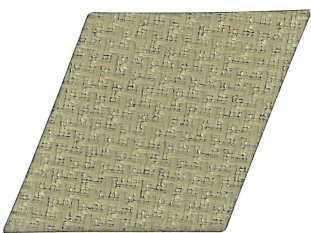
Cor 784



Cor 706



Cor 326



Cor 1010



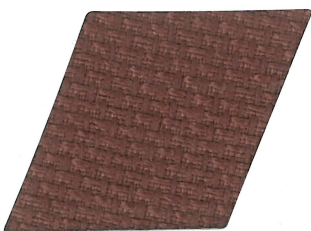
Cor 325



Cor 327



Cor 1398



Cor 5096



Cor 690



Cor 1390



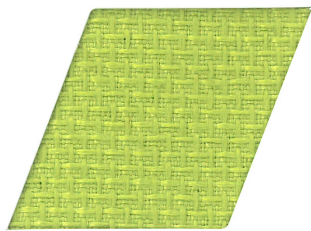
Cor 679



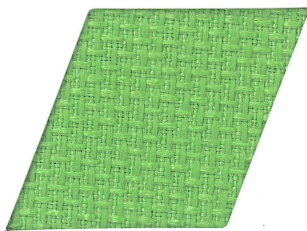
Revestimentos Especiais

**Tecido que se
molda às
diversas formas**

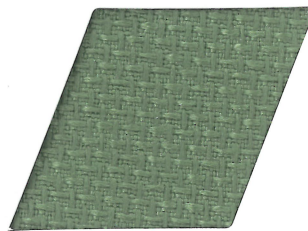
Basket



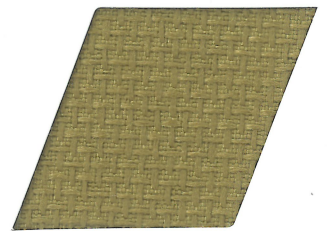
Cor 324



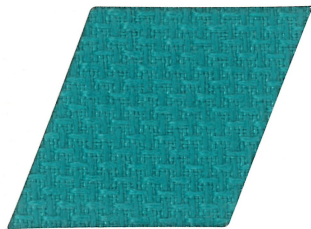
Cor 323



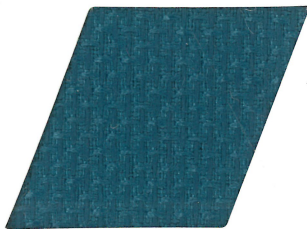
Cor 1022



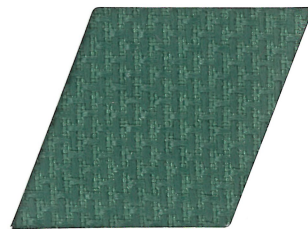
Cor 83



Cor 322



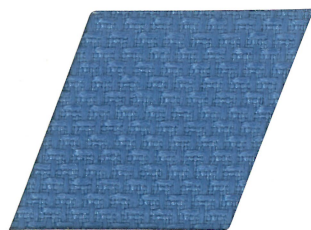
Cor 1533



Cor 1517



Cor 688



Cor 321



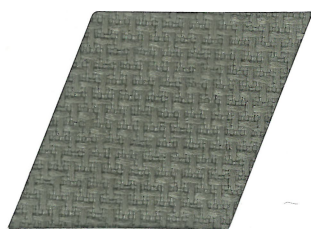
Cor 1098



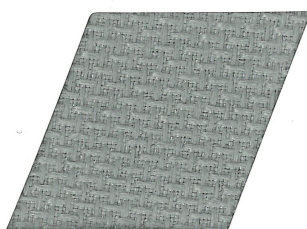
Cor 650



Cor 1009



Cor 5131



Cor 1272



Cor 1019



Cor 1011